



شركة جي تك انترناشونال

G-Tech International Company

VFD
PLC
HMI
ATS
INSTRUMENT
AUTOMATION
PANELS

شركة جي تك انترناشونال
G-Tech International Company

(للبيع بالجملة الأجهزة الكهربائية والإلكترونية) (for wholesale of electrical and electronic appliances)

☎ 24911824 ☎ 67064877 ✉ info@gtechinco.com 🌐 www.gtechinco.com

- Advanced Technology
- Consistent Quality
- Commitment Cost



☎ 67064877 ☎ 24911824

✉ info@gtechinco.com

🌐 www.gtechinco.com

Nidec
-All for dreams

CONTROL
TECHNIQUES

MULTISPAN

repol[®] S.A.

DEIF

ABB

FineTek

Uflow[™]
Automation

TEKNIC
ELECTRIC

SIEMENS

LEDL

VFD



- COMMANDER C200 AC DRIVES
- UNI DRIVE M700 AC / SERVO DRIVES
- PUMP DRIVE F600 & SOLUTIONS
- HVAC H 300 DRIVE SOLUTIONS
- MP SERIES DC DRIVES
- COMMANDER S 100 MICRO AC DRIVES

- COMMANDER C200 AC DRIVES
- UNI DRIVE M700 AC / SERVO DRIVES
- PUMP DRIVE F600 & SOLUTIONS
- HVAC H 300 DRIVE SOLUTIONS
- MP SERIES DC DRIVES
- COMMANDER S 100 MICRO AC DRIVES

MULTISPAN



- POWERSUPPLY
- PHASE FAILIURE RELAY
- ON/OFF TIMER RELAY
- LIQUID LEVEL REAY
- EARTH LEAKAGE RELAY
- LOAD SHARING RELAY



- INDUSTRIAL RELAY**
- PROGRAMMABLE RELAY**
- TIMER RELAY**
- MONITOR RELAY**
- SOLID STATE RELAY**
- POWER SUPPLIES**



- FLOW MEASUREMENT**
- PRESSURE MEASUREMENT**
- TEMPERATURE MEASUREMENT**
- SAFETY INSTRUMENT**
- POINT SWITCH**
- LEVEL TRANSMITTER**

Uflow™ Automation



- SOLENOID VALVES
- PNEUMATIC VALVES AND ACTUATOR
- ANGLE SEAT VALVES
- ONE TOUCH FITTINGS
- POLYURATHENE TUBES
- PNUEMATIC CYLINDER

TEKNIC ELECTRIC



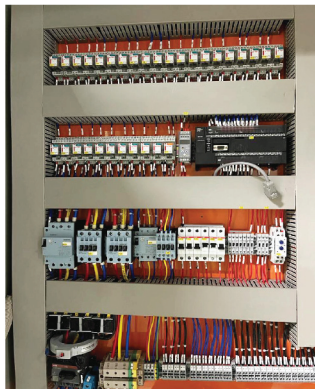
- PUSH BUTTONS
- PILOT LIGHTS
- CONTROL STATION
- ROTARY CAM SWITCHES
- LINEAR POTENTIO METER
- KEY SELECTOR SWITCH

SIEMENS

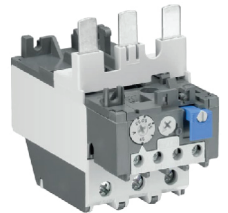


- LOGO LOGIC CONTROLLER
- SIMATIC S7-1200 & S7-1500 SERIES
- LOW VOLTAGE COMPONENTS
- HUMAN MACHINE INTERFACE
- PROCESS INSTRUMENTS
- MOTOR PROTECTION DEVICE

Swimming Pool Fountain Lights



- DISTRIBUTION BOX
- VFD PANELS
- MAIN SUB BOARD
- PLC PANELS
- ATS PANELS
- STARTER PANELS



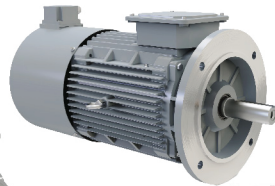
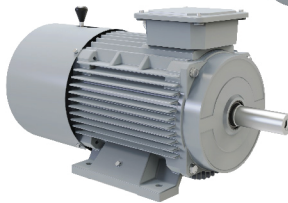
- CONTACTOR
- THERMAL OVERLOAD RELAY
- MCCB, ACB

- MANUAL MOTOR STARTER
- ISOLATORS, MCB, RCBO
- SURGE PROTECTION



- SINGLE GENSET CONTROLLER
- AGC 150 ENGINE DRIVES
- BATTERY CHARGER

- ADVANCED GENSET CONTROLLER
- AUTO TRANSFER CONTROLLER- ATS
- AUTO VOLTAGE REGULATOR -AVR



- ELECTRICAL MOTOR AND GEARED MOTOR RANGE FROM 0.18 KW TO 110 KW
- MOTOR EFFICIENCY IE2, IE3, IE4 AND RELUCTANCE MOTOR
- PROTECTION LEVEL IP 55 AND IP 65
- EASY INTEGRATION WITH VFD